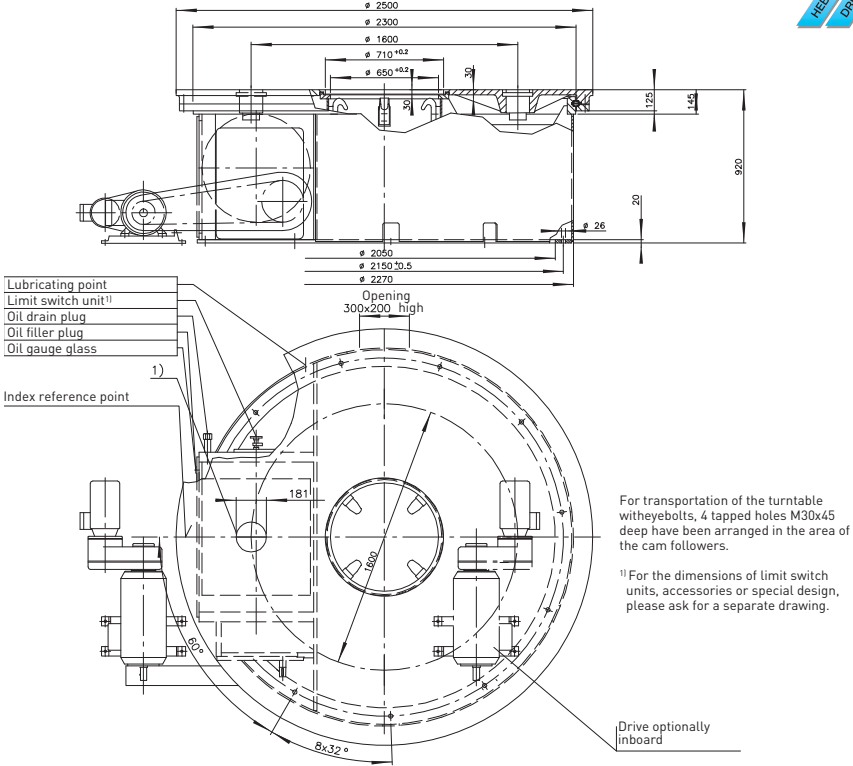
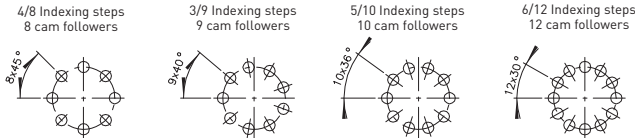


ED2500/A3748

Precision index drives for rotary motions



²⁾ Location of the cam followers at the index reference point
(Free areas must be provided accordingly in the tool plate)



Technical data

Static bearing capacity of table plate bearing
(theoretic factors of the bearing manufacturer)

$C_{OA} = 4883000 \text{ N}$

$C_{OR} = 4498000 \text{ N}$

$C_{OM} = 2642000 \text{ Nm}$

Permissible resulting tangential moment, due to process related forces incurred while the table plate is at standstill: $M_t = 44000 \text{ Nm}$

Order example:

ED2500 3 6,3 400 V - 50 Hz

└─ Motor data
└─ Cycle time
└─ Indexing steps
└─ Type

Indexing steps

Standard indexing steps: 2,3,4,5,6,8,9,10,12

further indexing steps on request

Mounting of tool plate see drwg.

order: ± 26 angular seconds

High-precision performance upon request

approx. 4500 kg (depending on size of motor)

C-flange motor to requirements

Tool plate

Accuracy

Total weight

Motor

Remark

This type range permits the construction of special models with different technical data. In order to prepare a detailed offer, we would need exact technical information.